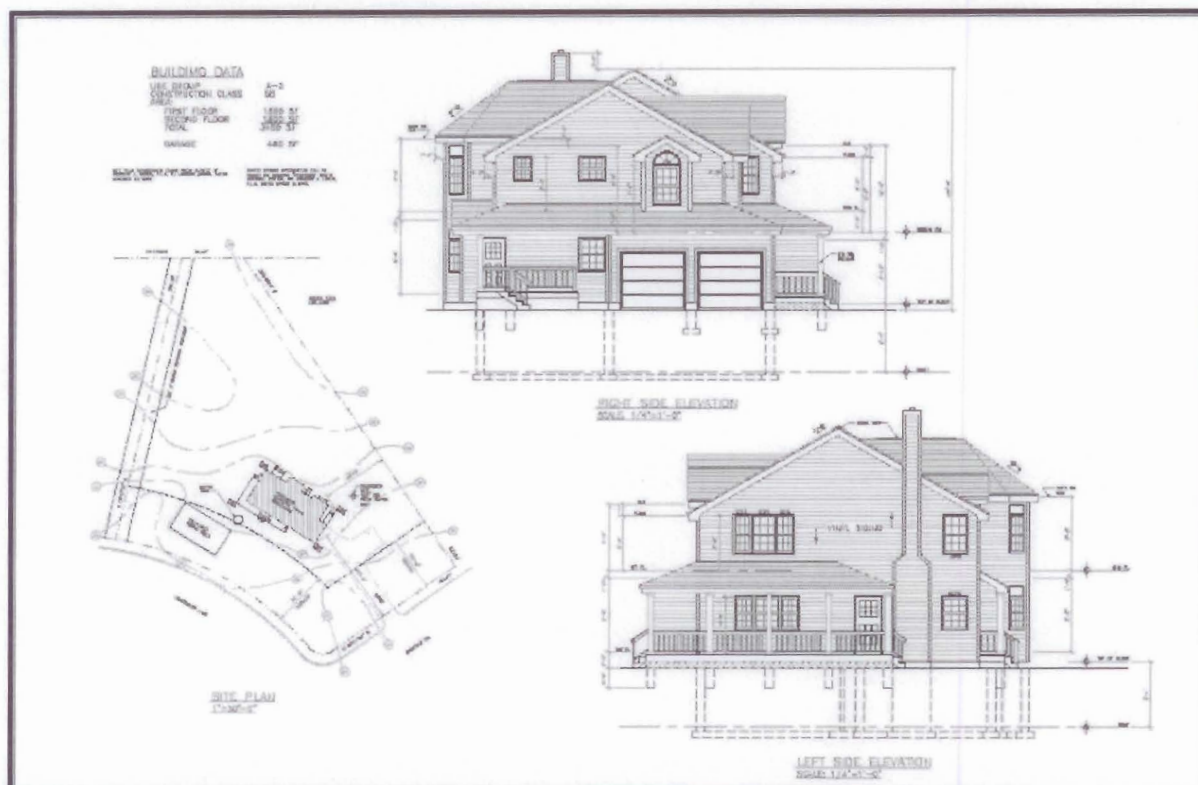


Kyle Monk
Morris Community High School
Drafting CADD - 2
Spring 2014



Portfolio Specifications: (Fill in your name, class, and date, and include this sheet as the 2nd page of your portfolio when turning it in).

The purpose of the portfolio is to present your work in an attractive, professional-looking format that will enhance your prospects during a job interview.

WORK TO INCLUDE:

- Include a minimum of **10 drawings** of your best work of the semester.
- Include a minimum of **5 drawings** selected by you from the Bonus drawings.
- Assignments that were not perfectly completed should be revised and corrected.
- All assignments must be finished, including title block and dimensions.
- **Include this sheet after the title page!**

TITLE PAGE: Create a title page. You may use borders, hatching, etc. but keep it legible. Minimum text height is 3/8 inch. You can use color to enhance your title page if you want. Include on the Title Page: **Your name, the school name, the course name, and the semester and year.**

BINDING: Portfolios must be bound with soft-cover. Arrange pages so that A-size sheets are read from the right side (bound along the top) and B-size sheets are read from the bottom (bound along the left edge and z-folded to fit in the binder).

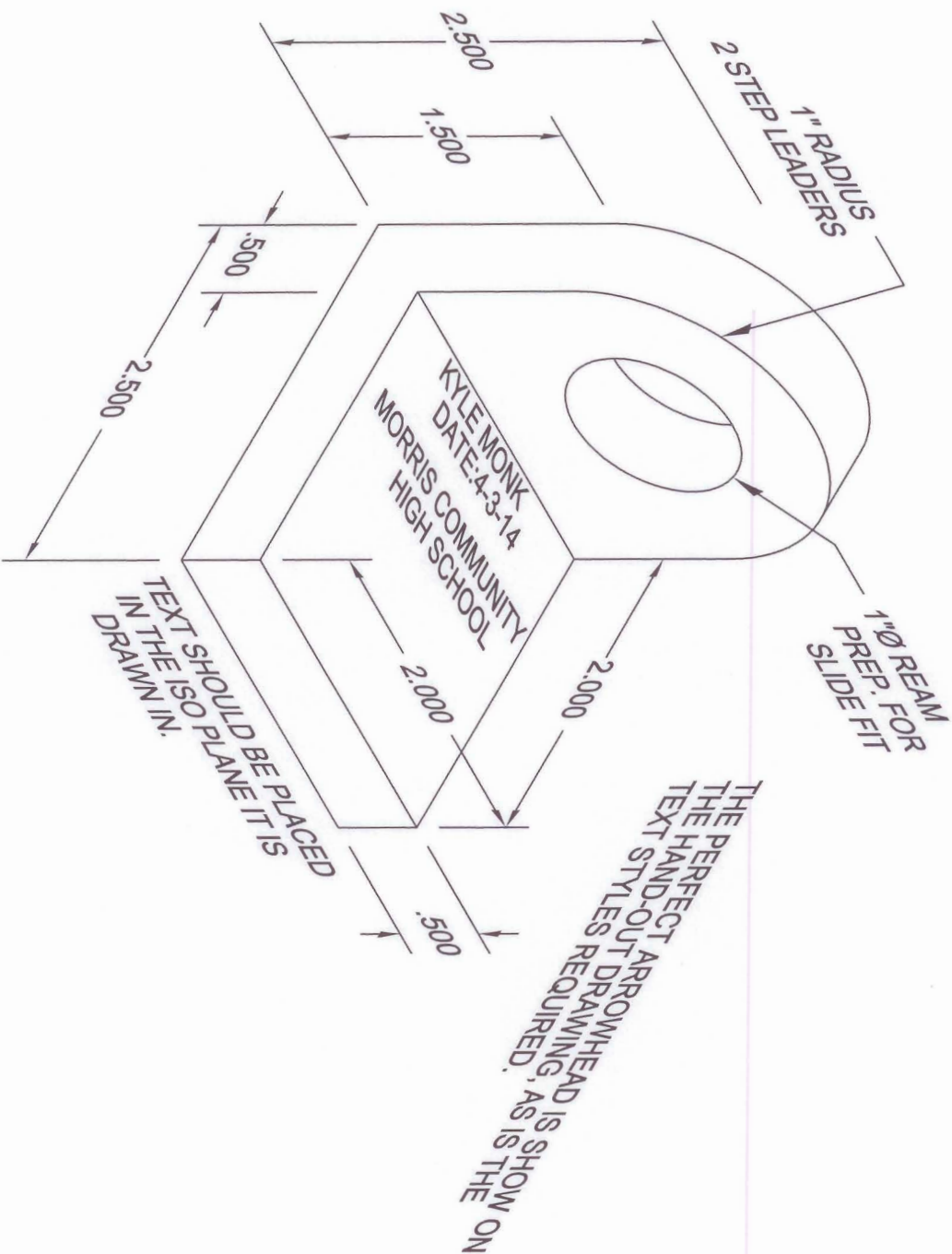
- **Acceptable bindings:** Soft cover binder or soft cover binder with comb binding. Do not use plastic sheet covers
- **Not acceptable bindings:** loose pages, stapled, pocket or 3 ring binders. These types of bindings will be returned un-graded.

ORGANIZATION: Drawings are to be arranged in order of difficulty from most complicated (in front of portfolio) to least complicated (placed in the back of your portfolio).

-----Do not write below this line-----

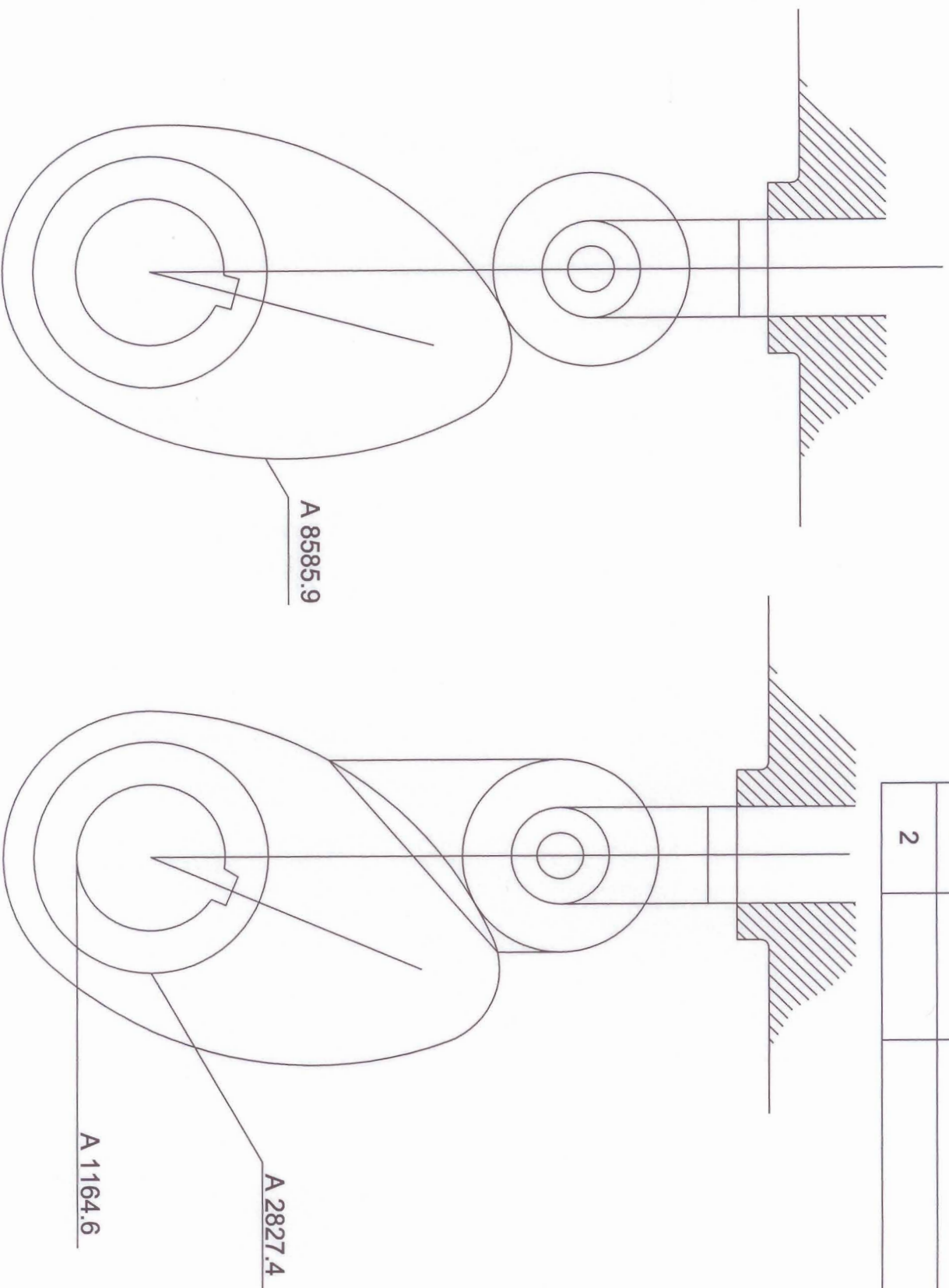
SPECIFICATION/TASK/SKILL	POINTS POSSIBLE	POINTS EARNED	COMMENTS
Title Page with name/class/details	15	15	
Number of drawings ≥ 15	60	60	
Organized in order of difficulty	15	15	
Drawings corrected/edited to your advantage	15	11	Some not corrected
All drawings have been dimensioned	20	17	Missing Dims
Total Possible Points	125	118	
Points deducted during Final Critique			
TOTAL POINTS		118	

REV.	DATE:	DESCRIPTION
1		
2		



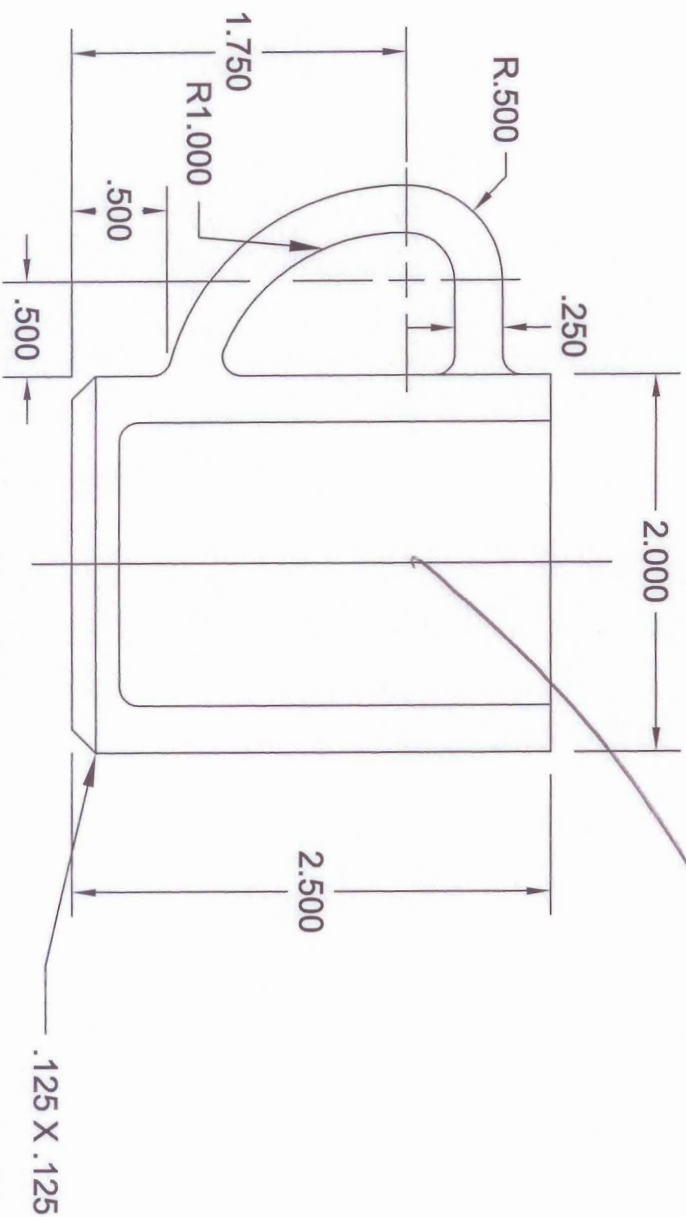
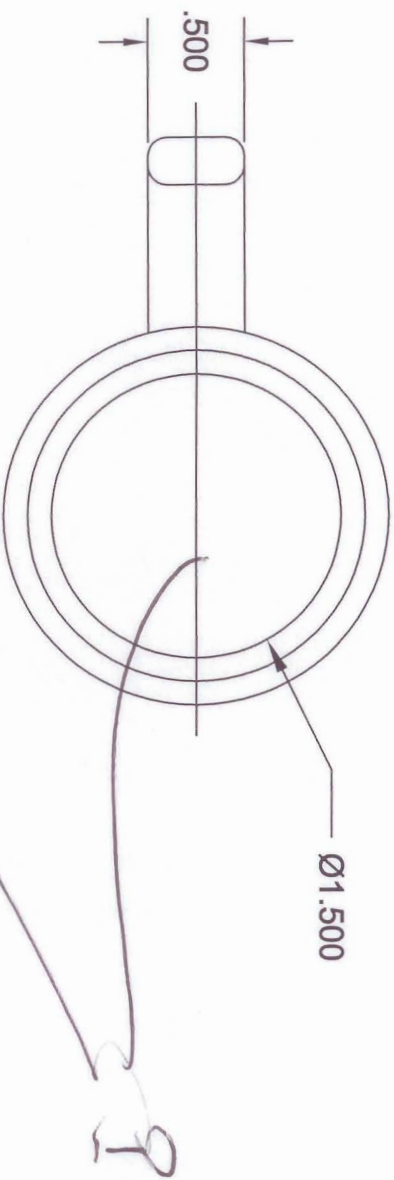
MORRIS COMMUNITY HIGH SCHOOL	TITLE: DRAWING NAME	DWG NO. PO3-13.DWG
SCALE: 1=1	DATE: 4/3/14	DRAWN BY: KYLE MONK
		GRADE: REV. 0

REV.	DATE:	DESCRIPTION
1		
2		



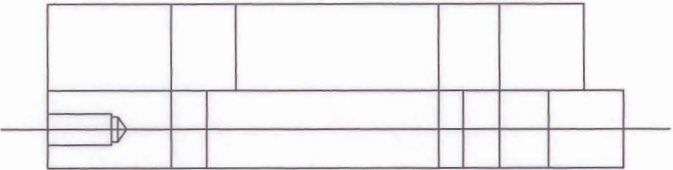
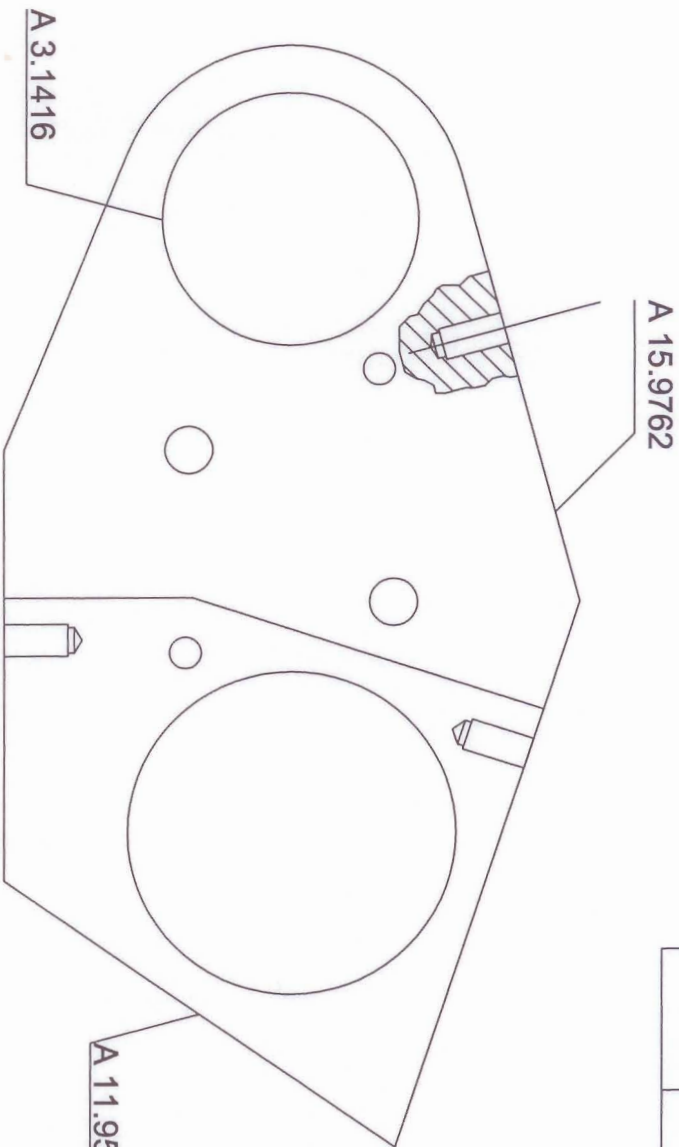
MORRIS COMMUNITY HIGH SCHOOL	TITLE: CAM LOBE	DWG NO. PO3-13.DWG
SCALE: 1=1	DATE: 1/17/14	DRAWN BY: KYLE MONK
		GRADE: REV. 0

REV.	DATE:	DESCRIPTION
1		
2		



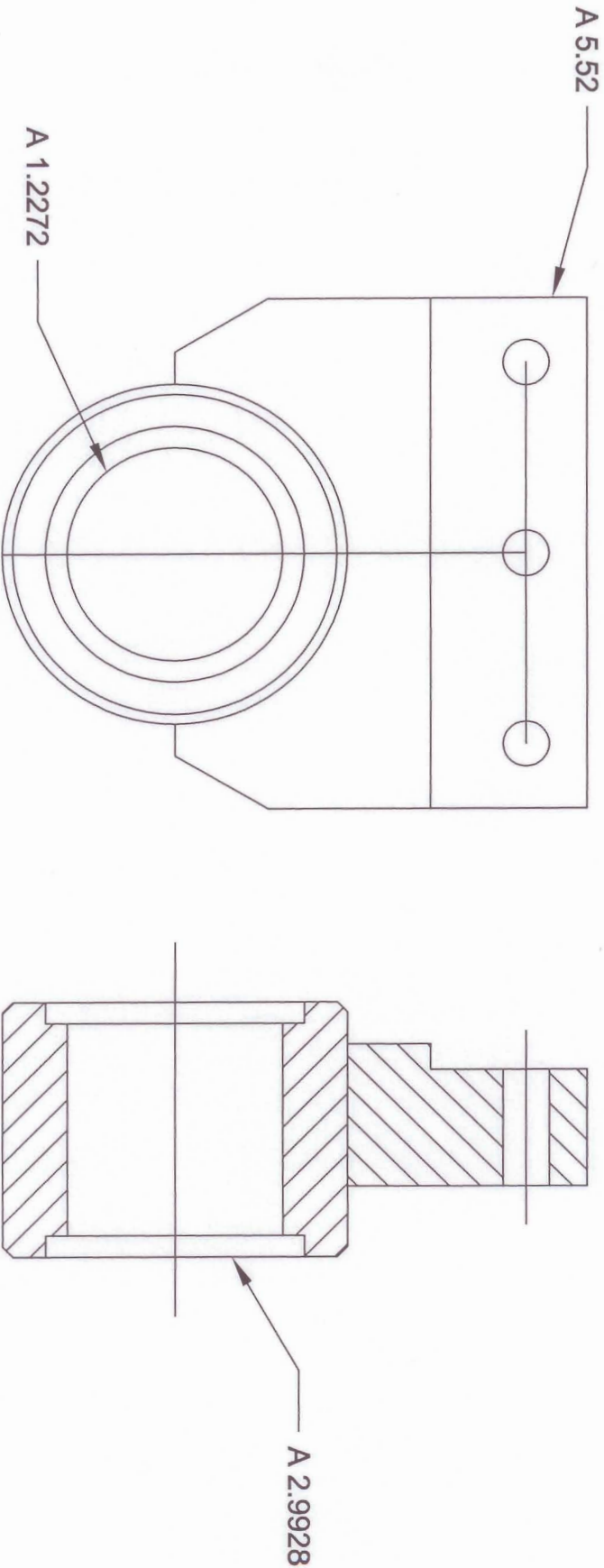
MORRIS COMMUNITY HIGH SCHOOL	TITLE: COFFEE MUG	DWG NO. B101-12.DWG
SCALE: 1=1	DATE: 2/6/14	DRAWN BY: KYLE MONK
		GRADE: REV. 0

REV.	DATE:	DESCRIPTION
1		
2		



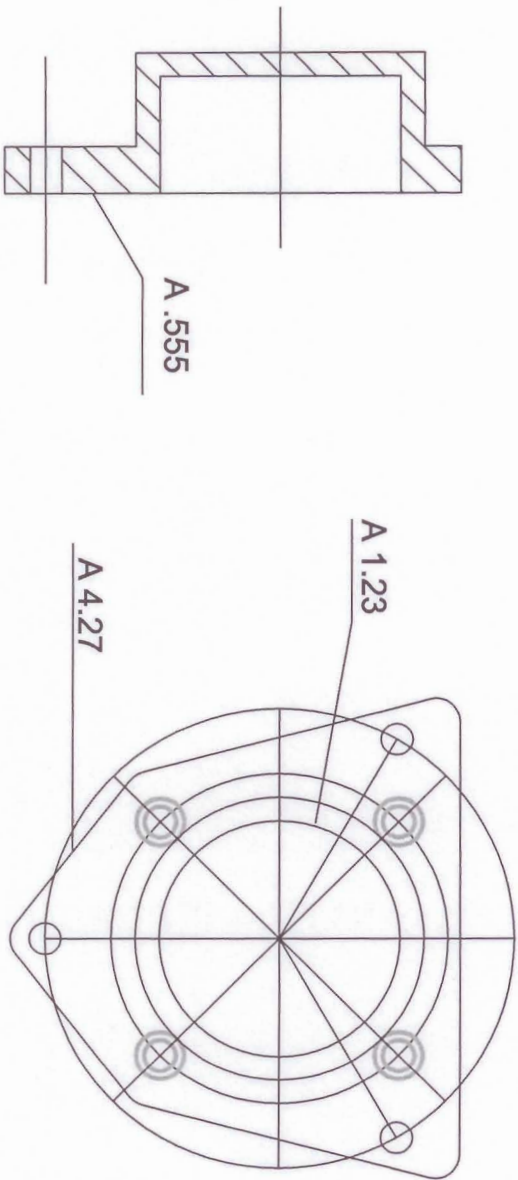
MORRIS COMMUNITY HIGH SCHOOL	TITLE: FINAL EXAM	DWG NO. PO3-13.DWG
SCALE: 1=1.5	DATE: 1/16/14	DRAWN BY: KYLE MONK
	GRADE:	REV. 0

REV.	DATE:	DESCRIPTION
1		
2		



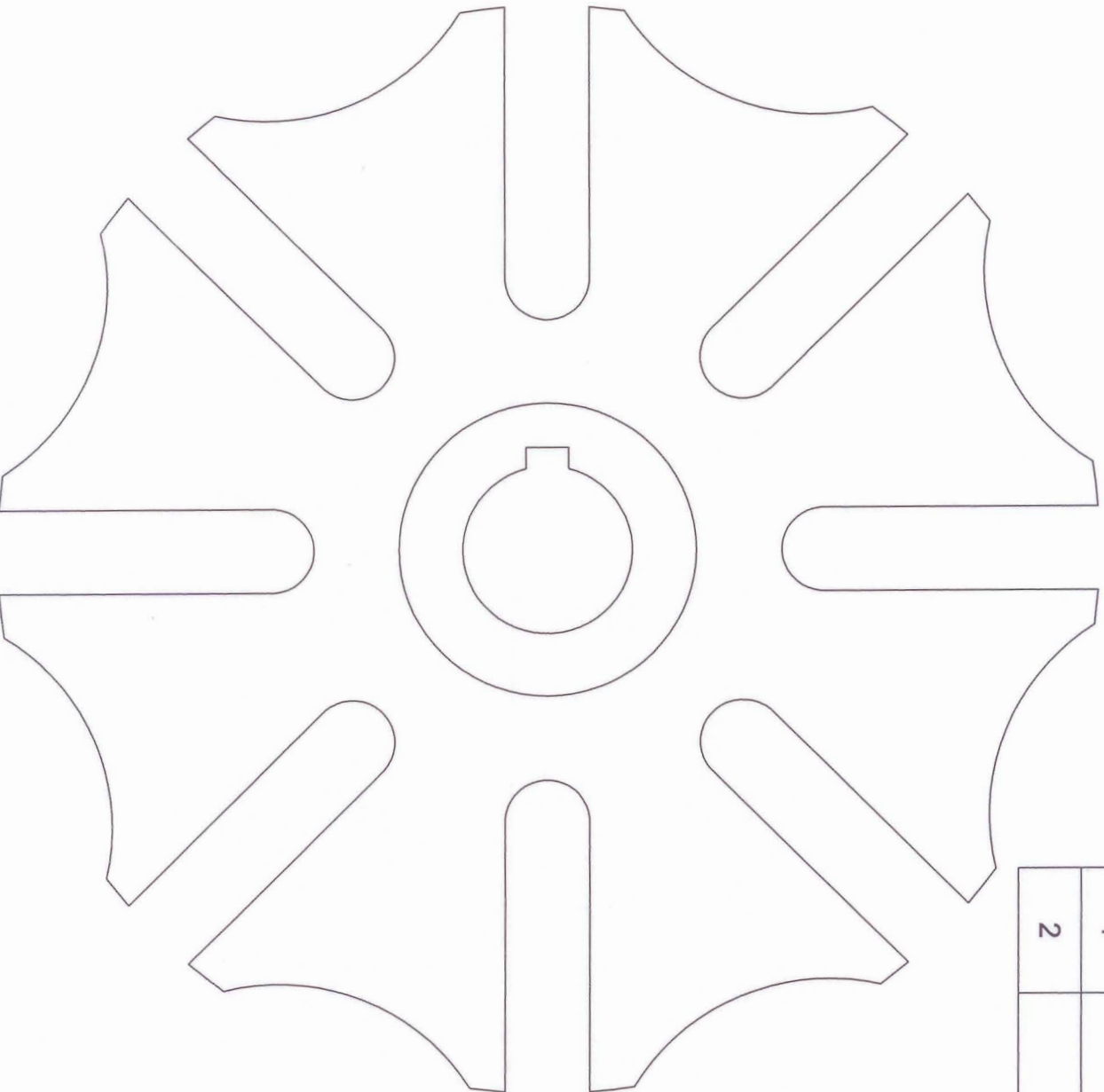
MORRIS COMMUNITY HIGH SCHOOL	TITLE: CROSS-SECTIONAL	DWG NO. PO3-13.DWG
SCALE: 1=1	DATE: 1/14/14	DRAWN BY: KYLE MONK
		GRADE: REV. 0

REV.	DATE:	DESCRIPTION
1		
2		



MORRIS COMMUNITY HIGH SCHOOL	TITLE: FIGURE 7-19	DWG NO. PO3-13.DWG
SCALE: 1=1	DATE: 1/15/14	DRAWN BY: KYLE MONK
		GRADE: REV. 0

REV.	DATE:	DESCRIPTION
1		
2		

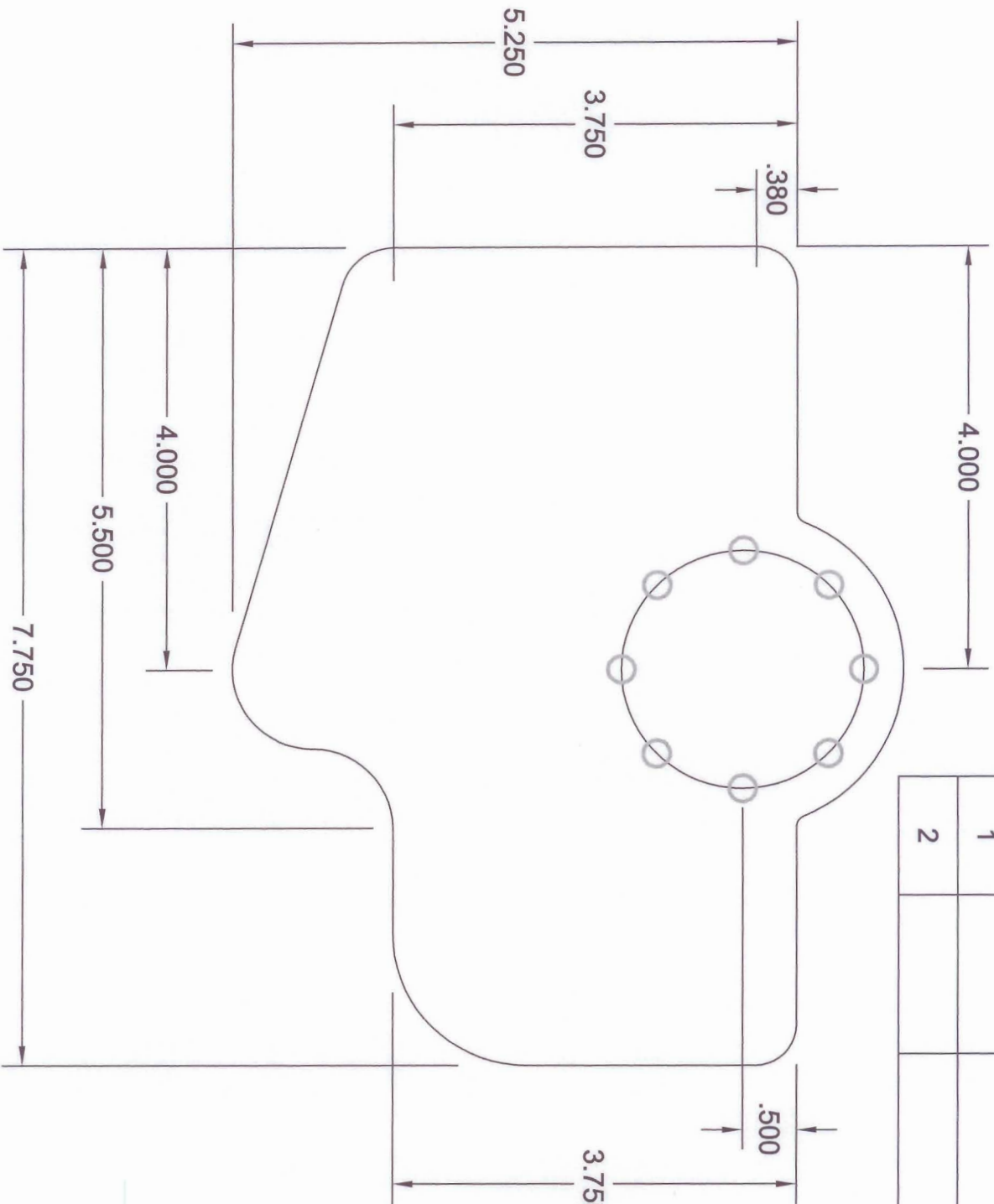


TO DRAW THIS DRAWING
QUICKER AND EASIER, DRAW
ONE OF THE PARTS OF THE
BLADE THEN USE THE ARRAY
COMMAND. THEN PICK THE
POLAR ARRAY SET IT UP SO
THAT THE BLADE IS COMPLETE
ALL THE WAY AROUND.

No Dimensions

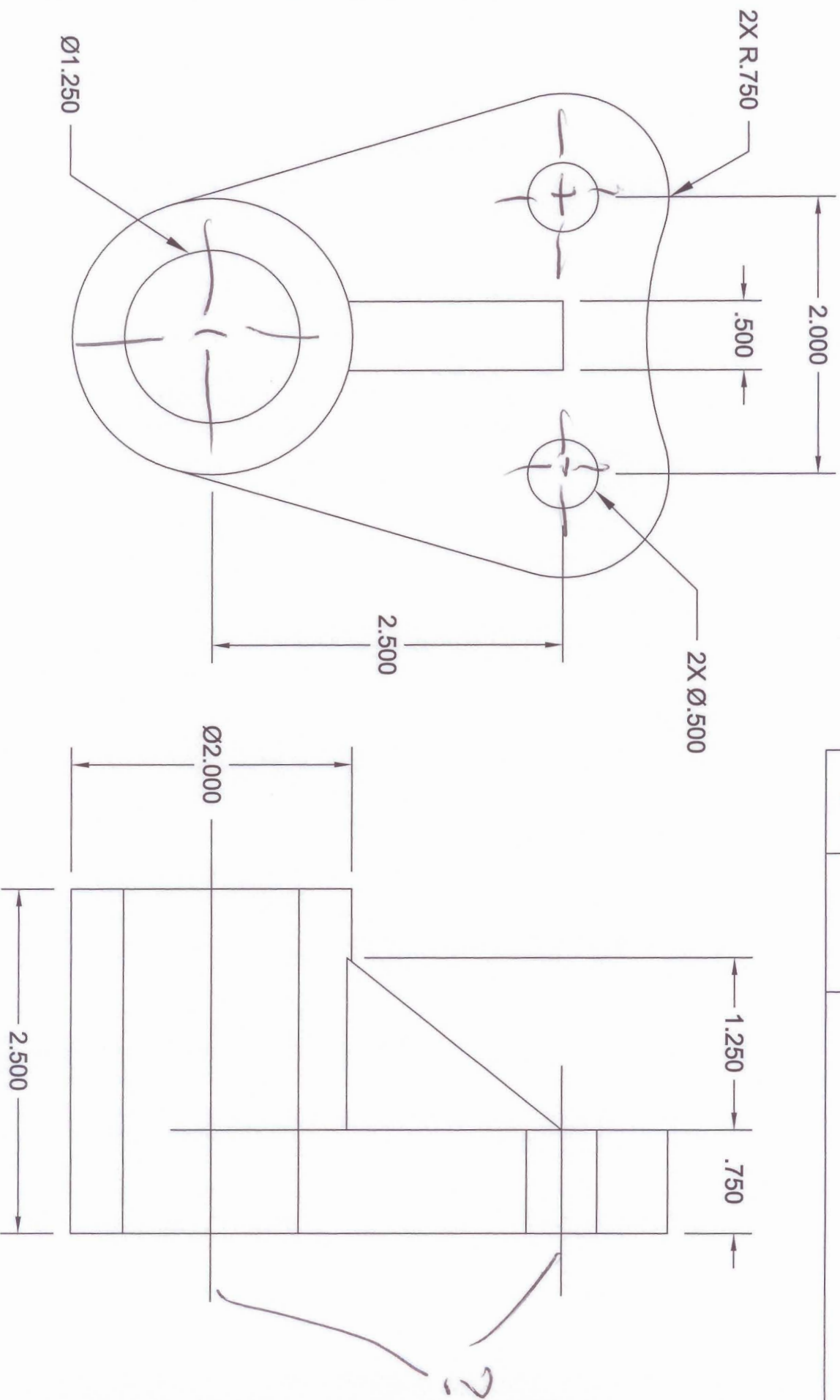
MORRIS COMMUNITY HIGH SCHOOL	TITLE: BLADE2	DWG NO. PO3-13.DWG
SCALE: 1=1	DATE: 9/5/13	DRAWN BY: KYLE MONK
		GRADE: REV. 0

REV.	DATE:	DESCRIPTION
1		
2		



MORRIS COMMUNITY HIGH SCHOOL	TITLE: US GASKET	DWG NO. B101-44.DWG
SCALE: 1=1.5	DATE: 2/3/14	DRAWN BY: KYLE MONK
	GRADE:	REV. 0

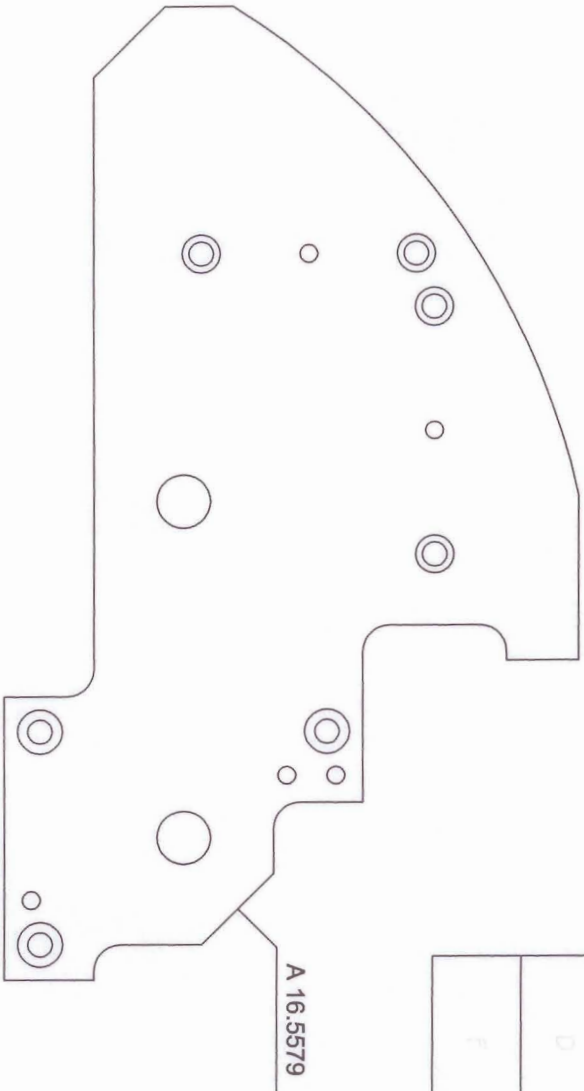
REV.	DATE:	DESCRIPTION
1		
2		



MORRIS COMMUNITY HIGH SCHOOL	TITLE: SHAFT MOUNT	DWG NO. B101-13.DWG
SCALE: 1=1	DATE: 2/6/14	DRAWN BY: KYLE MONK
	GRADE:	REV. 0

REV.	DATE:	DESCRIPTION
1		
2		

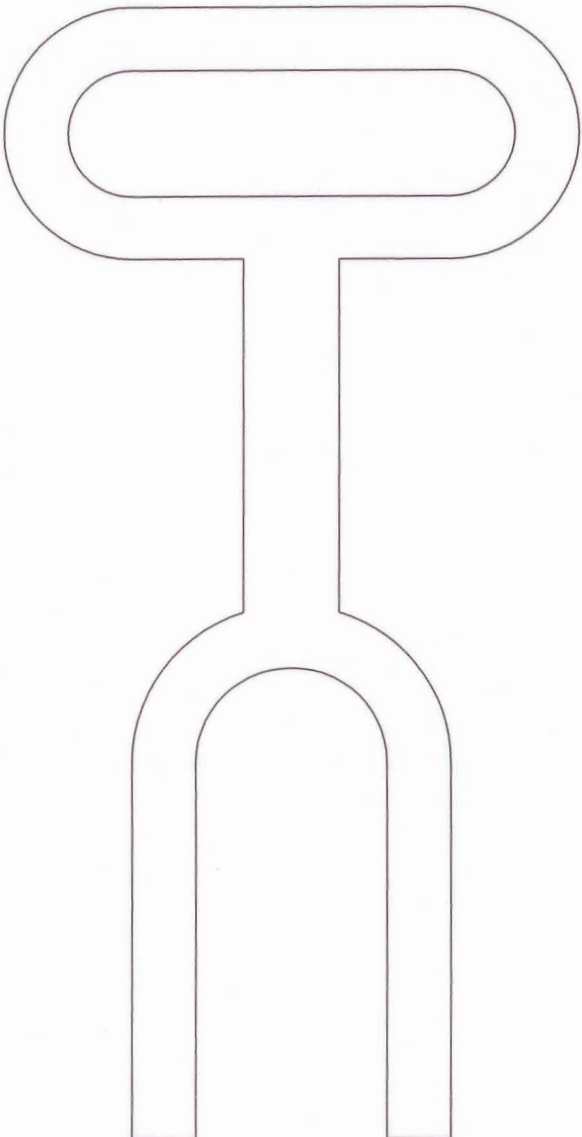
HOLE	DESCRIPTION	QTY
A	Ø .125 THRU	4
B	Ø .375 THRU	2
C	B-.32 UNF-2B	1
D	Ø .149 Ø .262 CHDRG X .130 DF	4
F	Ø .171 Ø .312 CHDRG X .164 DF	5



MORRIS COMMUNITY HIGH SCHOOL		TITLE: FINAL EXAM NUMBER 3		DWG NO. PO3-13.DWG	
SCALE: 3/4=1	DATE: 1/22/14	DRAWN BY: KYLE MONK		GRADE:	REV. 0

REV.	DATE:	DESCRIPTION
1		
2		

Drms?



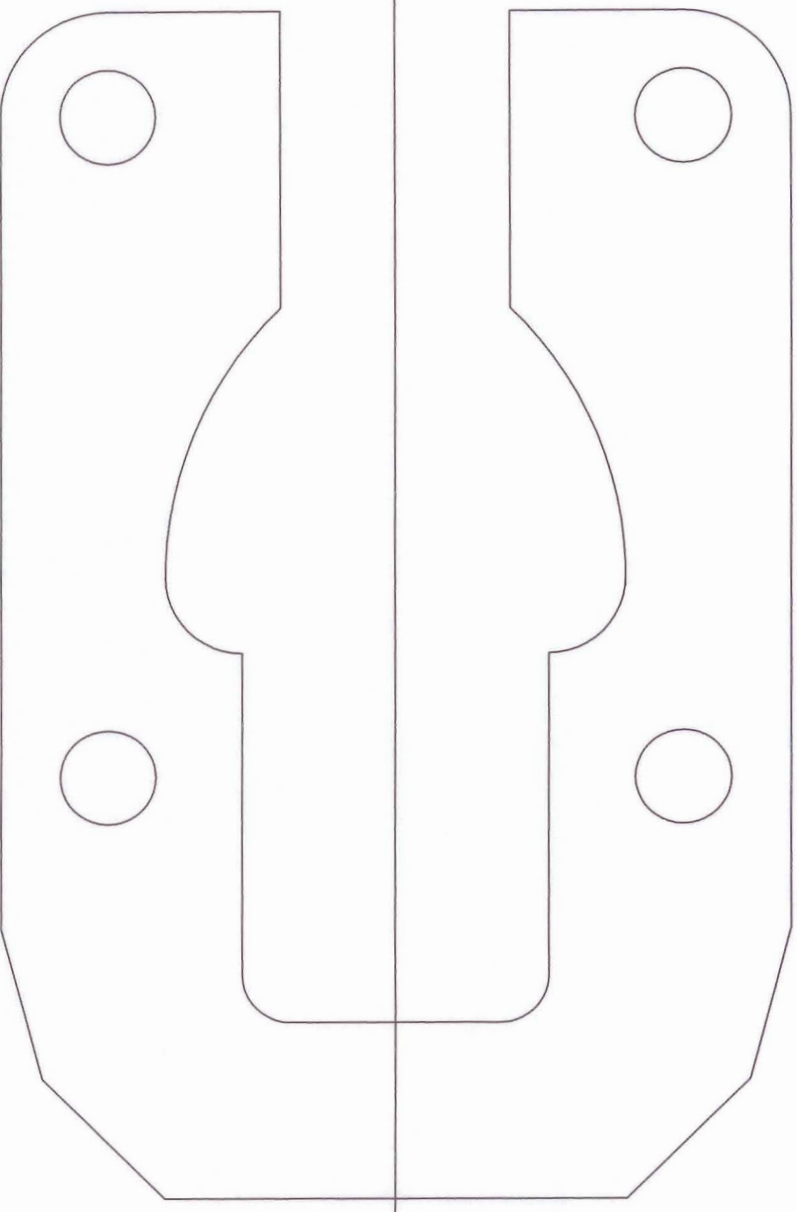
TOTAL AREA= 14.79 SQ. INCHES
PERIMETER= 34.67 INCHES
TOTAL AREA= 11.250 SQ. INCHES (MINUS SLOT)

MORRIS COMMUNITY HIGH SCHOOL	TITLE: ADJUSTING FORK	DWG NO. ADJ. FORK.DWG
SCALE: 1=1.5	DATE: 12/4/13	DRAWN BY: KYLE MONK
	GRADE:	REV. 0

REV.	DATE:	DESCRIPTION
1		
2		

Nb,
Dims

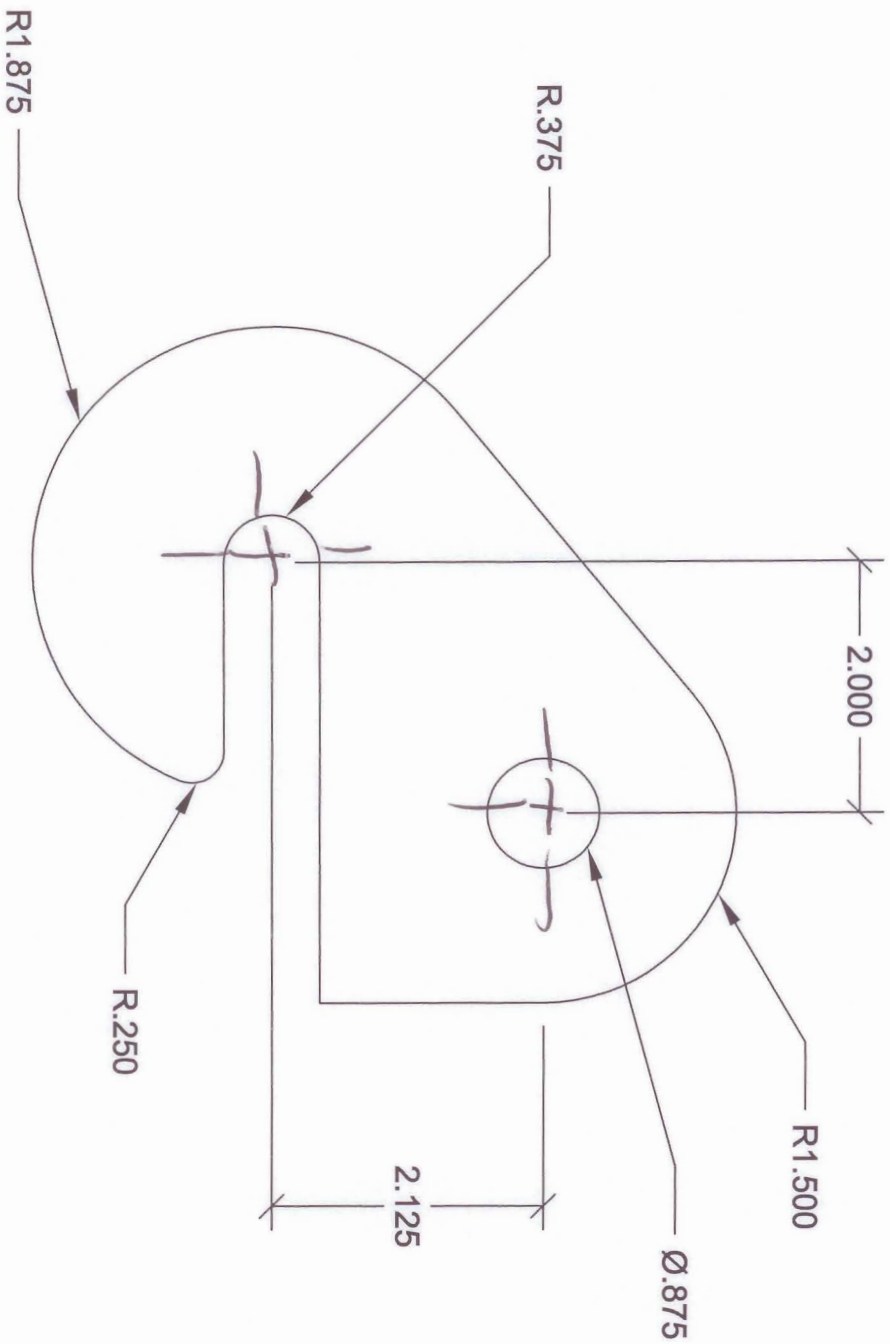
2



THE BEST WAY TO DRAW THIS DRAWING IS TO DRAW EITHER THE TOP HALF OR THE BOTTOM HALF. ONCE ONE HALF IS DONE USE THE MIRROR COMMAND AND PUT THE MIRROR LINE IN THE SAME SPOT AS THE RED LINE. DOING SO WILL THEN COMPLETE THE OBJECT.

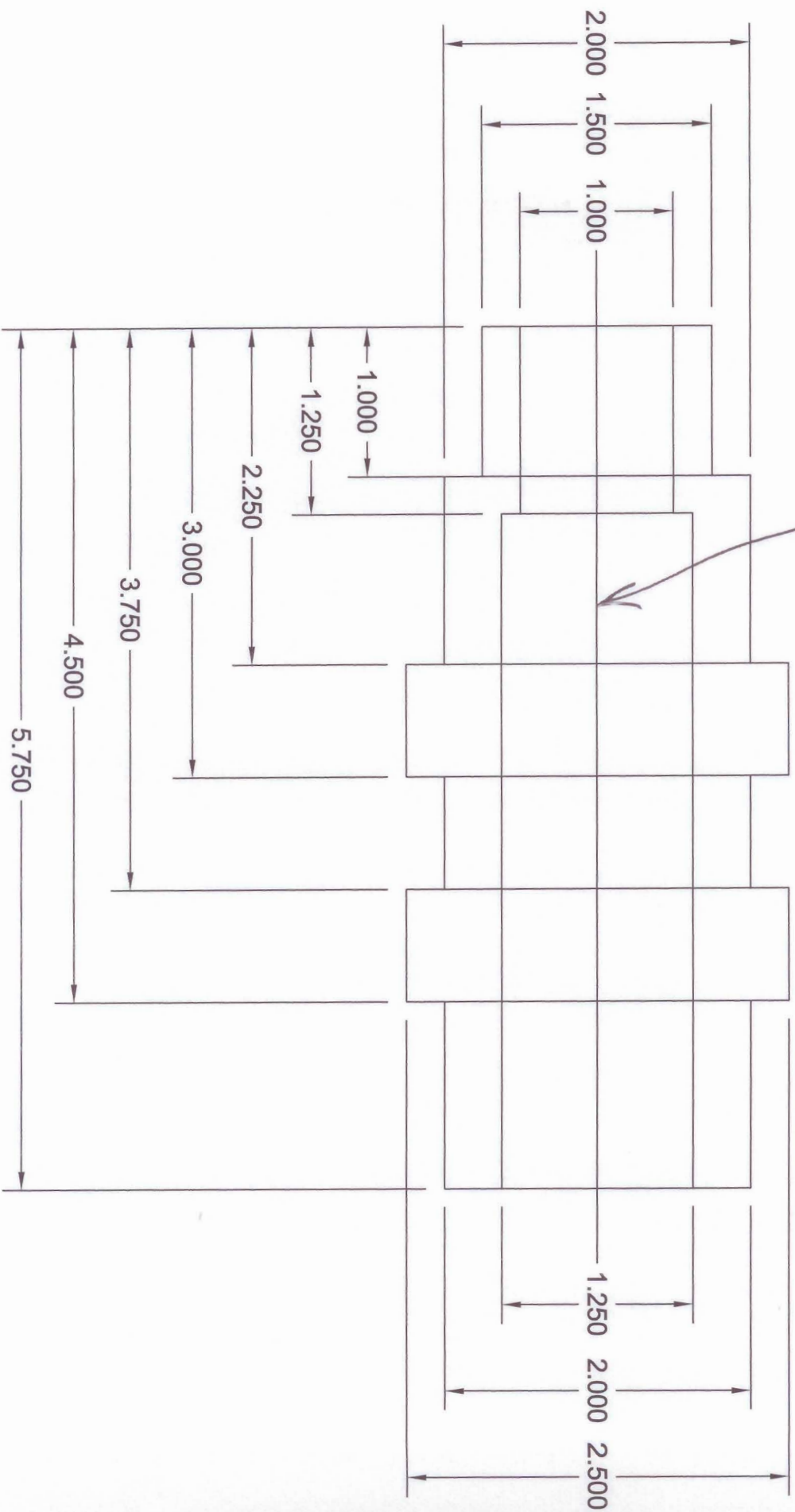
MORRIS COMMUNITY HIGH SCHOOL	TITLE: LATCH PLATE (BUILD)	DWG NO. LATCH PLATE.DWG
SCALE: 1=1	DATE: 10/7/13	DRAWN BY: KYLE MONK
	GRADE:	REV. 0

REV.	DATE:	DESCRIPTION
1		
2		

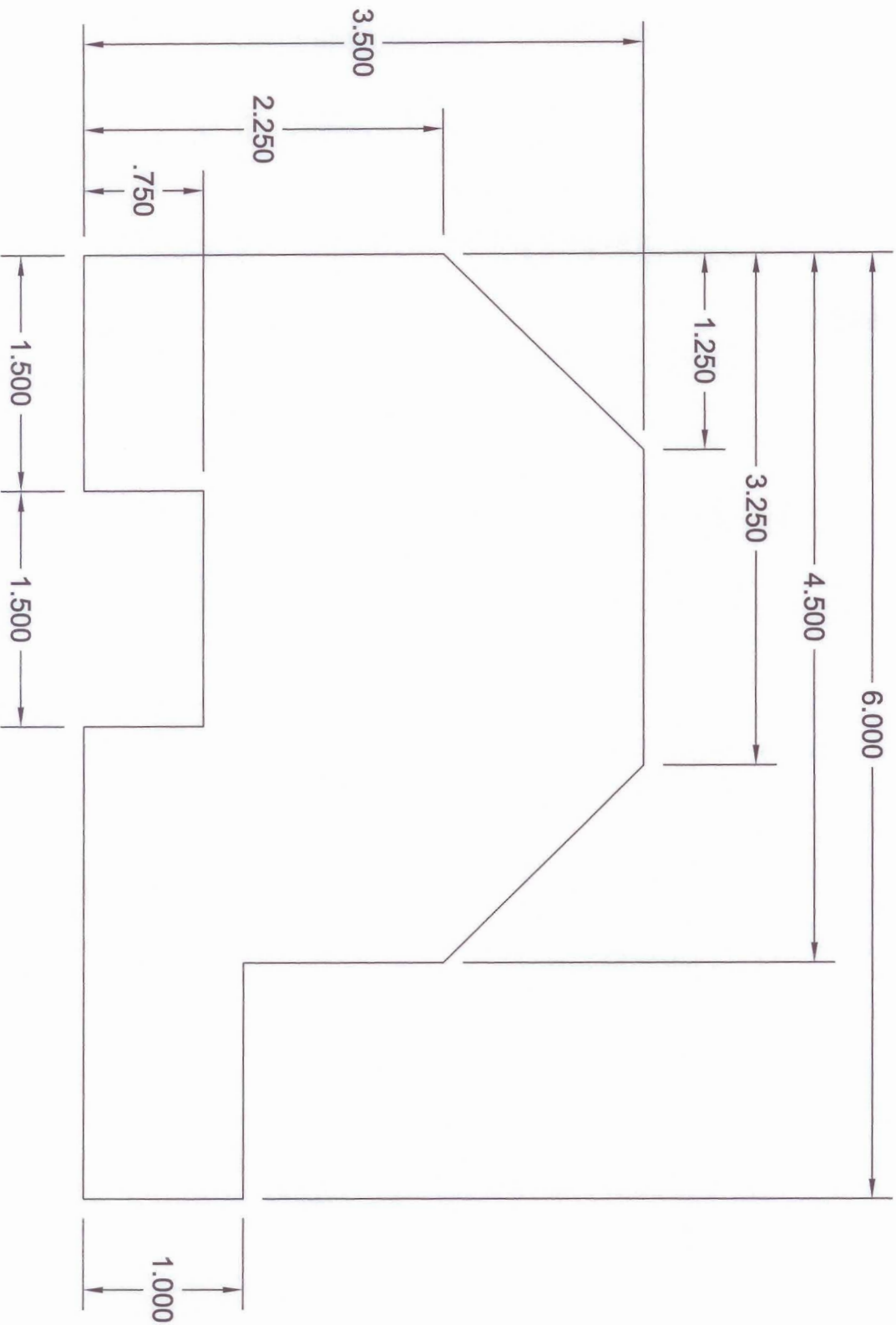


MORRIS COMMUNITY HIGH SCHOOL	TITLE: COVER PLATE	DWG NO. B101-31.DWG
SCALE: 1=1.5	DATE: 1/24/14	DRAWN BY: KYLE MONK
	GRADE:	REV. 0

REV.	DATE:	DESCRIPTION
1		
2		



REV.	DATE:	DESCRIPTION
1		
2		



MORRIS COMMUNITY HIGH SCHOOL	TITLE: PLATE NO. 1 W/DIMS (BONUS)	DWG NO. B101-19.DWG
SCALE: 1=1	DATE: 1/30/14	DRAWN BY: KYLE MONK
	GRADE:	REV. 0